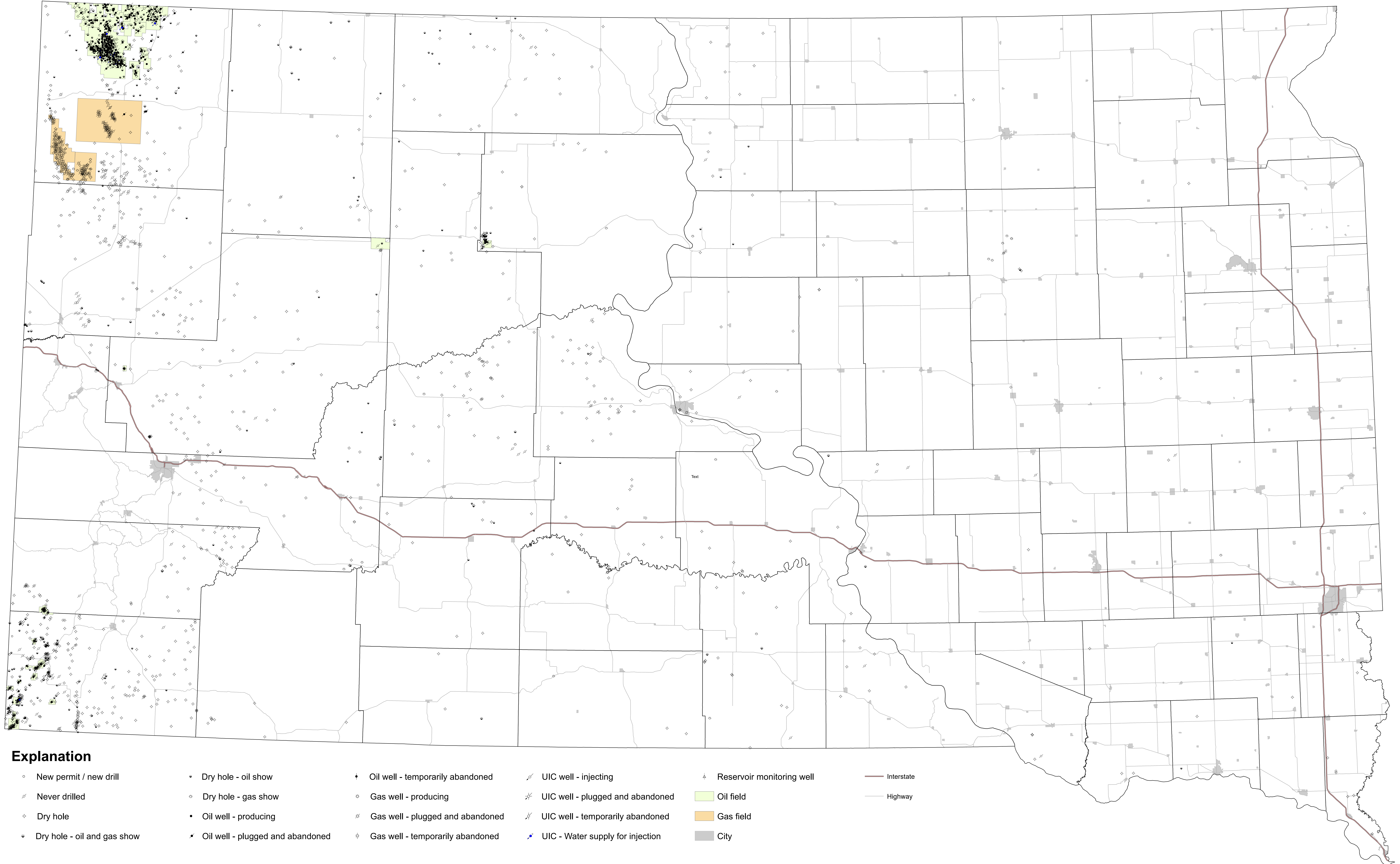
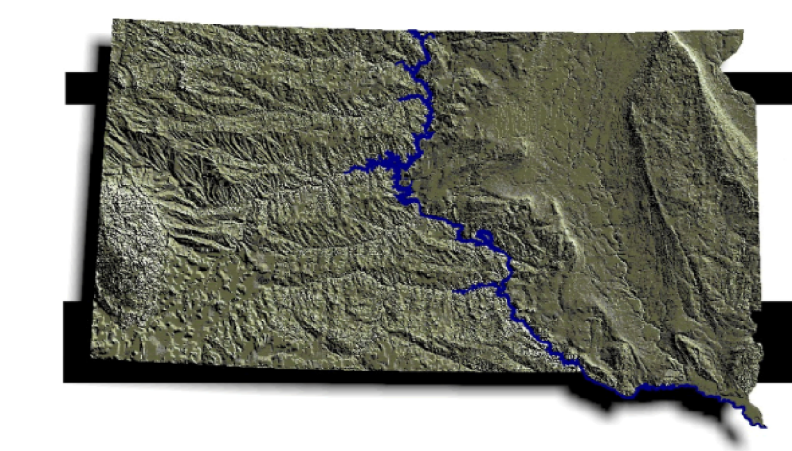


# South Dakota Oil and Gas, Well, Test Hole, and Permit Locations

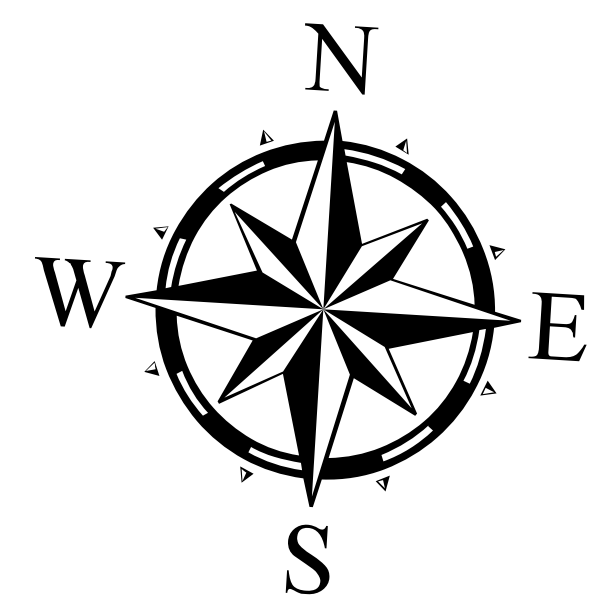


## Explanation

- |                               |                                    |                                    |                                    |                             |              |
|-------------------------------|------------------------------------|------------------------------------|------------------------------------|-----------------------------|--------------|
| ◦ New permit / new drill      | ◦ Dry hole - oil show              | ⚡ Oil well - temporarily abandoned | ⚡ UIC well - injecting             | ⚡ Reservoir monitoring well | — Interstate |
| ⚡ Never drilled               | ◦ Dry hole - gas show              | ◦ Gas well - producing             | ⚡ UIC well - plugged and abandoned | ◻ Oil field                 | — Highway    |
| ◊ Dry hole                    | • Oil well - producing             | ⚡ Gas well - plugged and abandoned | ⚡ UIC well - temporarily abandoned | ◻ Gas field                 |              |
| ◊ Dry hole - oil and gas show | ⚡ Oil well - plugged and abandoned | ◊ Gas well - temporarily abandoned | ⚡ UIC - Water supply for injection | ◻ City                      |              |

0 25 50 100 Miles

Scale 1:500,000



Compiled by DANR's Geological Survey Program, January 2022

The State of South Dakota (State) makes no claims, promises, or guarantees about the absolute accuracy, completeness, or adequacy of this data. The use of this data is limited to informational and educational purposes only. This data is provided as is and in no event or circumstance shall the State, nor any agency, employee or representative be liable for any damages or losses, including without limitation, damages resulting from lost profits or revenue, claims by third parties or any special, incidental, punitive or consequential damages, arising out of the use of this data. The State may make changes to information at any time to add, update, or correct the information provided. Any errors or omissions should be reported for investigation. Any person or entity that relies on information obtained from this map does so at his or her own risk.